

User Guide for BT Camera Application

Installation:

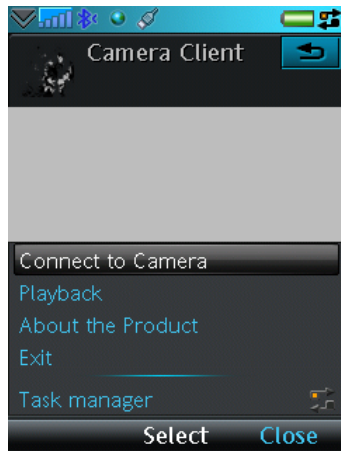
1. Connect the phone to PC.
2. Start PC Suite, which is provided by your mobile phone manufacturer. You have to use your own mobile phone manufacturer's PC Suite. Another manufacturer's will not do.
3. Open Application Installation Program in PC Suite
4. Select the appropriate file and double click it. If you have S60 phone, choose file `s60btcc.sis`. If you have UIQ phone, choose file `uiqbtcc.sis`
5. Follow the installation guide in the phone

Usage for UIQ:

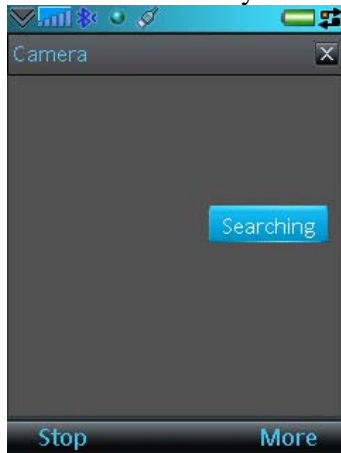
1. Connect to Camera

First, you should connect your phone to GenieSys Camera, after which you can preview/record the video and capture a still image.

Click on the button "Connect to Camera".



The phone will popup a Bluetooth camera list, you can select GenieSys BT Cam.



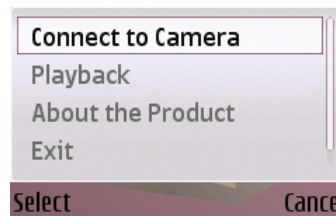
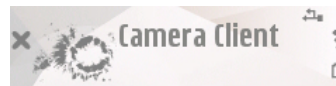
If the Camera is not in the list, you can click on the button "More", "View folder", "All". (Notice: make sure your camera is on.)

Usage for S60:

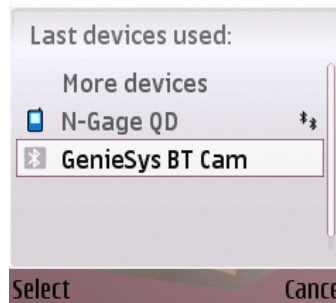
1. Connect to Camera

First, you should connect your phone to GenieSys Camera, after which you can preview/record the video and capture a still image.

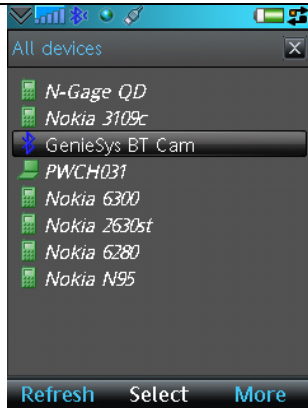
Click on the button "Connect to Camera".



The phone will popup a Bluetooth device list, you can select GenieSys Camera.



If the Camera is not in the list, you can click on the button "More devices" to re-search the Bluetooth device. (Notice: make sure your camera is on.)



Connection needs a pass code; you can enter **1234** in the text dialog.

2. Preview video

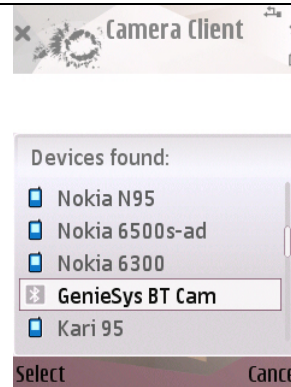
After the connection, you can preview the video in different style. Click on "VGA Mode" button, you can use QQVGA (160 * 120) mode or QVGA (320 * 240) mode to preview.



Click on "Rotate" button, you can rotate the image as you wanted.



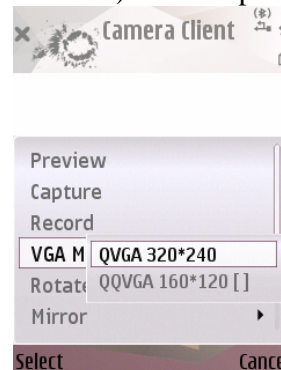
Click on "Mirror" button, you can use the camera image as a mirror.



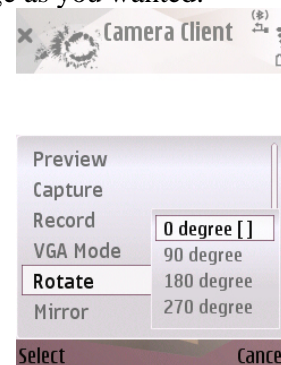
Connection needs a pass code; you can enter **1234** in the text dialog.

2. Preview video

After the connection, you can preview the video in different style. Click on "VGA Mode" button, you can use QQVGA(160 * 120) mode or QVGA(320 * 240) mode to preview.



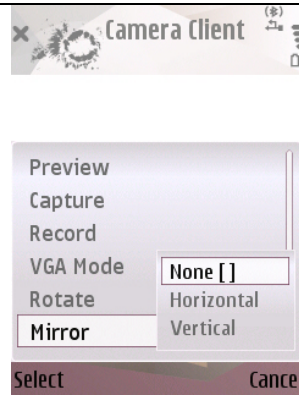
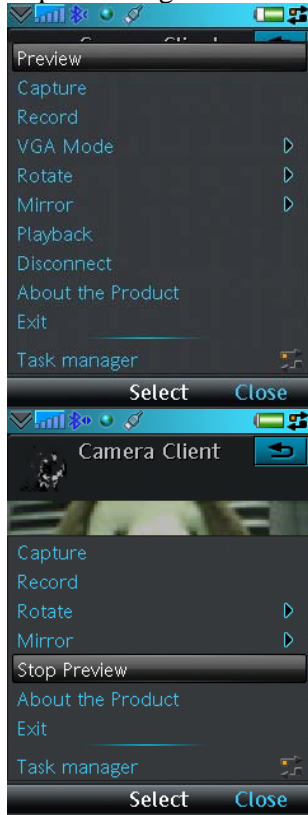
Click on "Rotate" button, you can rotate the image as you wanted.



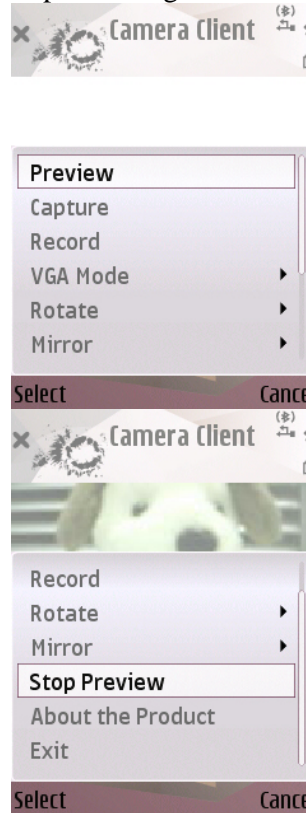
Click on "Mirror" button, you can use the camera image as a mirror.



Upon are three display settings, you can set them as you wanted before your previewing Or you can set the last two settings when you're previewing. You can click on "Stop Preview" button to stop the previewing.

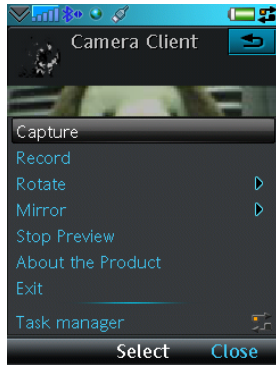


Upon are three display settings, you can set them as you wanted before your previewing Or you can set the last two setting when you're previewing. You can click on "Stop Preview" button to stop the previewing.



3. Capture image

When you're previewing, you can capture the still image by clicking on the "Capture" button.



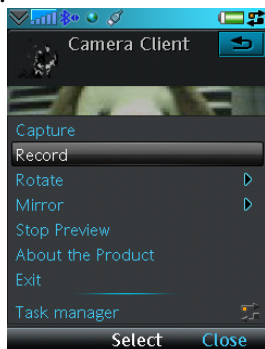
Of course, you also could capture image after connection but not in previewing.



The image will be saved in the phone's image path. You can get it from PC suite.

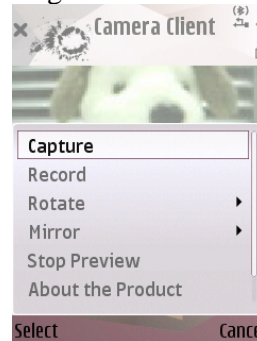
4. Record video

After the connection or when you're previewing, you can press "Record" button to record the video to your phone. The record could be played later. The display settings should be set before recording; you can't reset them when recording.

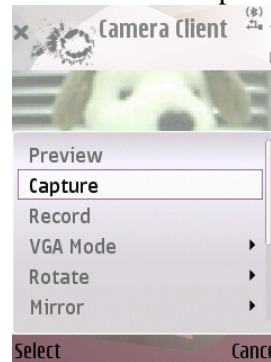


3. Capture image

When you're previewing, you can capture the still image by clicking on the "Capture Image" button.



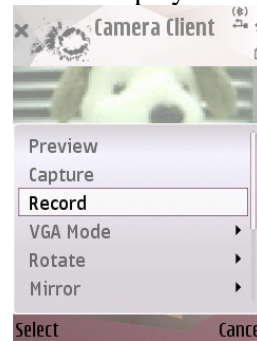
Of course, you also could capture image after connection but not in previewing.



The image will be saved in the phone's image path. You can get it from PC suite.

4. Record video

After the connection or when you're previewing, you can press "Record" button to record the video to your phone. The record could be played later.



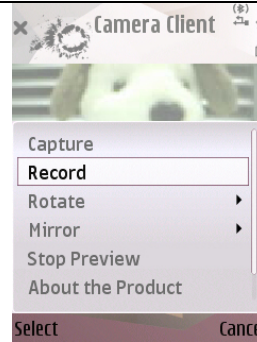


You can click on "Stop Record" button to stop the recording. The video will be saved in the phone's video path. You can get it using PC suite.



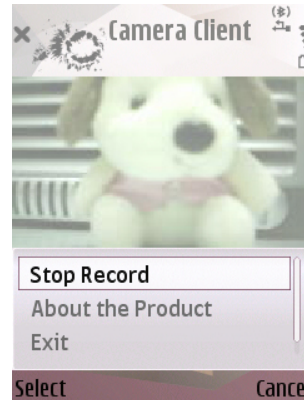
5. Playback

You can play the video by clicking on "Playback" button, and then a video selection dialog will be pop up. You can select the video from the list.



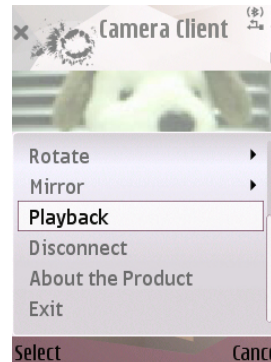
The display settings should be set before recording; you can't reset them when recording.

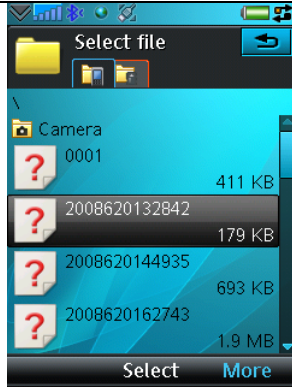
You can click on "Stop Record" button to stop the recording. The video will be saved in the phone's video path. You can get it using PC suite.



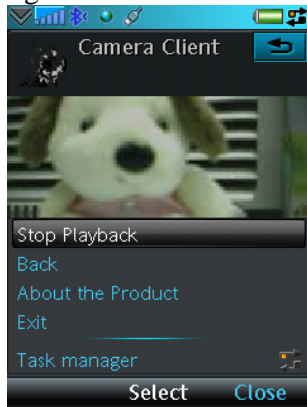
5. Playback

You can play the video by clicking on "Playback" button, and then a video selection dialog will be pop up. You can select the video from the list.





You can click on "Stop Playback" to stop the playing.



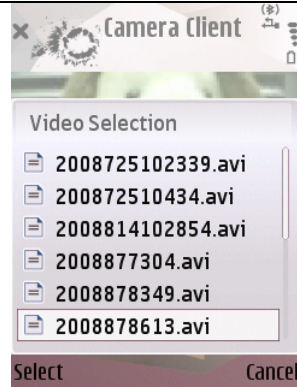
6. Disconnect

You can click on "Disconnect" to disconnect with camera. After which re-connect or connect to another camera.

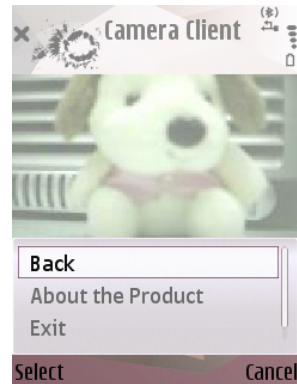


7. Close the application

Click on "Exit" to close the application.

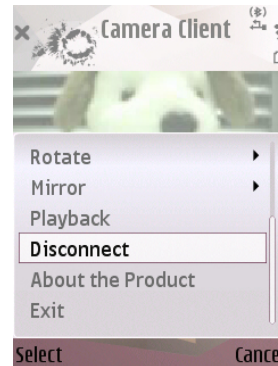


You can click on "Back" to stop the playing.



6. Disconnect

You can click on "Disconnect" to disconnect with camera. After which re-connect or connect to another camera.



7. Close the application

Click on "Exit" to close the application.

Regulatory

Notice:

This equipment has been tested and found to comply with the limits for a Class B digital device, pursuant to Part 15 of the FCC Rules. These limits are designed to provide reasonable protection against harmful interference in a residential installation. This equipment generates uses and can radiate radio frequency energy and, if not installed and used in accordance with the instructions, may cause harmful interference to radio communications. However, there is no guarantee that interference will not occur in a particular installation. If this equipment does cause harmful interference to radio or television reception, which can be determined by turning the equipment off and on, the user is encouraged to try to correct the interference by one of the following measures:

- Reorient or relocate the receiving antenna.
- Increase the separation between the equipment and receiver.
- Connect the equipment into an outlet on a circuit different from that to which the receiver is connected
- Consult the dealer or an experienced radio/TV technician for help

FCC Caution: Any changes or modifications not expressly approved by the party responsible for compliance could void the user's authority to operate this equipment.

This device complies with Part 15 of the FCC rules. Operation is subject to the following two conditions:

- 1) This device may not cause harmful interference
- 2) This device must accept any interference received, including interference that may cause undesired operation.

This transmitter must not be co-located or operating in conjunction with any other antenna or transmitter.

IMPORTANT NOTE:

Radiation Exposure Statement

This equipment complies with FCC radiation exposure limits set forth for an uncontrolled environment. End users must follow the specific operating instructions for satisfying RF exposure compliance. To maintain compliance with FCC RF exposure compliance requirements, please follow operation instruction as documented in this manual.